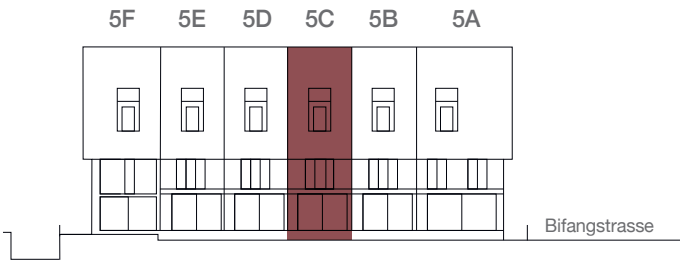
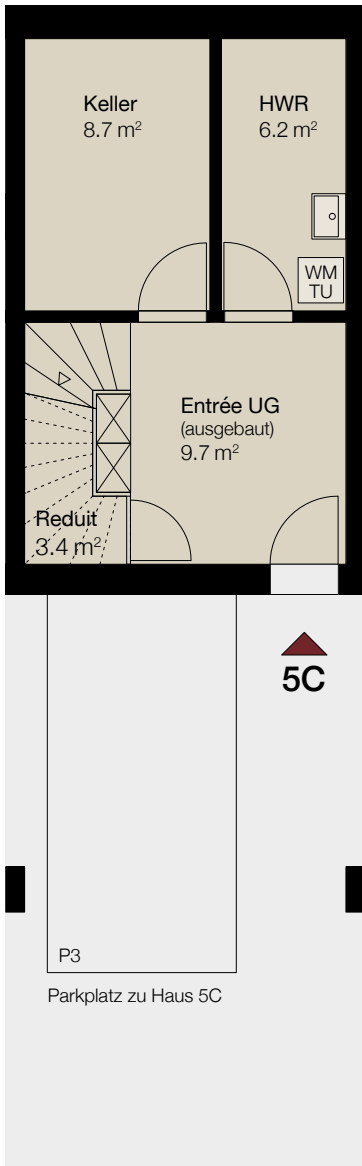


HAUS 5C

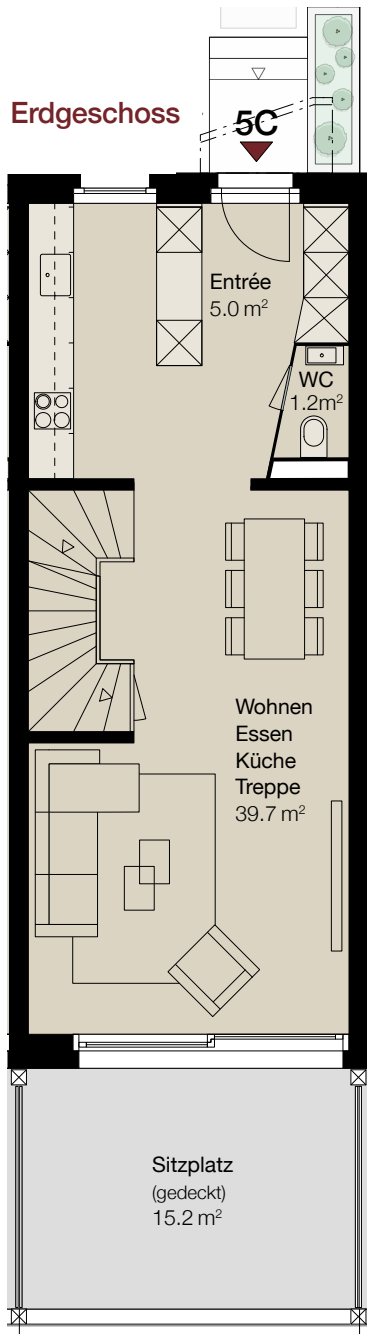
5.5 Zimmer | Wohnfläche: 142.2m² | Untergeschoss: 28.0m²
Sitzplatz: 15.2m² | Balkon: 15.2m² | Parzellenfläche: 134m²
Kubatur: 669.1m³ | Parzellen-Nr.: 6669



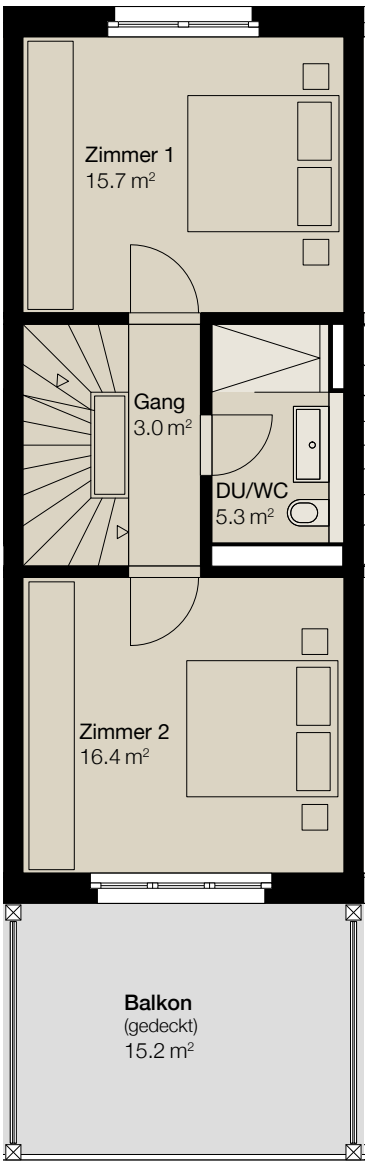
Untergeschoss



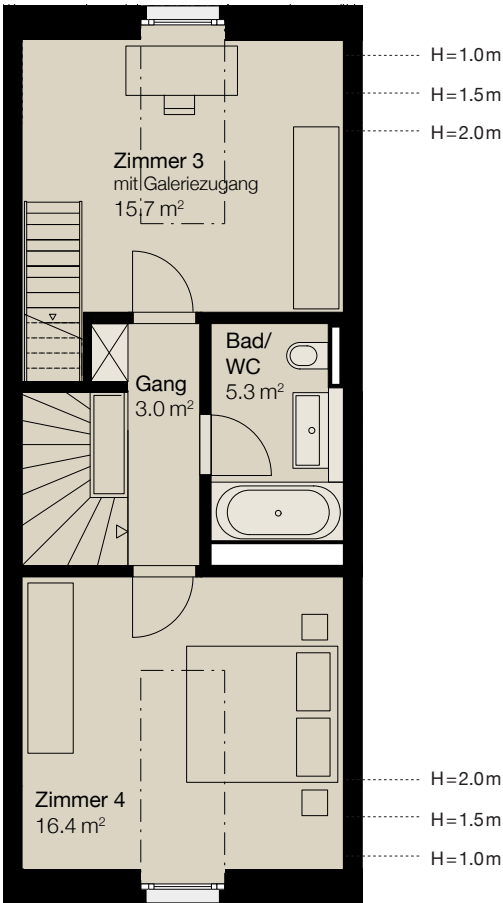
Erdgeschoss



Obergeschoss



Dachgeschoss



Galeriegeschoss

